

Year One Phonics Screening



What is it?

- * Statutory
- * Tests phonics knowledge
- * 40 words; 20 real and 20 pseudo
- * Two sections – phase 2 and 3 and phase 5
- * Phase 4 doesn't have its own section as phase 4 requires children to practise blends.

What is tested?

- *Segmenting and Blending
- *40+ phonemes
- *Digraphs/trigraphs and their alternatives, e.g. /ai/ ay a_e,

When is it?

- *Children will be tested in June 2024.
- *Class teacher
- *1:1

After the test...

- * Pass score (in the past it has been 32).
- * Letter sent home with child's score.
- * What the school will do to support your child.
- * Re-take in year 2 if pass score is not met.

fip



pon



hab

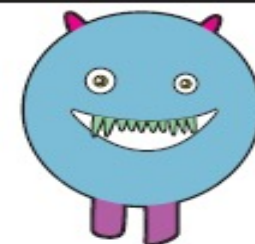


ulb



Section 1

plap



froin



melp



heent



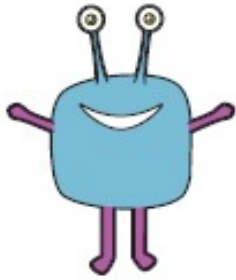
shed

long

soil

chart

yair



blies



keam



whape



river

diving

beehive

midnight


In School...

- * Daily Phonics
- * Extra phonics sessions
- * Phonics intervention
- * Stories shared daily
- * Read a range of texts
- * You will receive a personalised phonics pack in designed to help your child.

At home...

You can help your child by:

- * Reading with your child everyday
- * Discussing your favourite stories
- * Reading a range of texts
- * Re-reading texts to build fluency and sight reading
- * Playing games such as Phonics Play
- * Practising segmenting and blending
- * Playing listening games
- * Practising reading common exception and sight words



Please contact your child's class teacher if you have any questions regarding the phonics screening or require further support with phonics or reading at home. Please use your child's link book to do this.