

Welcome to



Emerald Class!



In the morning, you will walk
through the main gate with your
grown up.



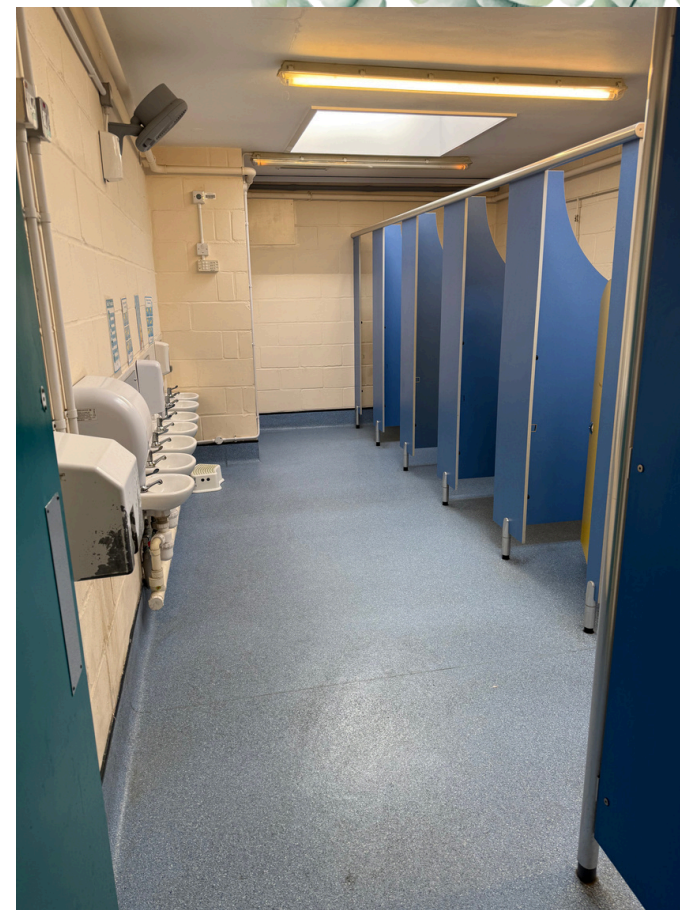
You will then walk up the stairs and in through the main school door. You will then walk down the coridor to Emerald Class.



You will have your own peg with your name on. You can hang all of your things here to keep them safe.



This is your new classroom. You will
do lots of fun and exciting learning
in here!



These are the toilets you will use.
They are the same toilets you used
in Year 1.



This is Miss Reeve.
She will be your
teacher.



This is Mrs Fenn.
She will be your
teaching assistant.



Miss Reeve and Mrs Fenn will look after
you, help you learn, help you if you get
hurt, stuck or worried and make you
smile!



At the end of the day, your grown ups
will pick you up from the playground
to take you home. You will go home out
of this door.



Miss Reeve and Mrs Fenn can't wait to
have you start in Emerald Class!
See you soon!